

# COOLTOUCH

## RX-702A

### Dual 7" Widescreen LCD Multimedia Monitor with Integrated Audio



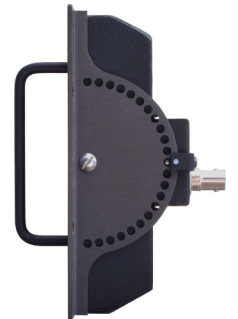
- Two 7" Widescreen LCD Video Monitors
- 2400 x 480 Pixels, 400 cd/m<sup>2</sup>, 400:1 Contrast
- Two Composite Video Inputs - per screen
- One VGA Input - per screen
- One Analog Audio Input - per screen
- Integrated Audio Confidence Monitor
- 3 Rack Units Tall, 2.1" / 53mm Deep Chassis

Offering superb quality, yet at a highly cost effective price, the RX-702A dual 7" widescreen rack mount monitor includes one audio, two composite video, and one VGA input - per screen and offers excellent picture quality even under high ambient light conditions. The built-in VGA scalar can accommodate resolutions from 640x480 to 1024x768. Each screen has discreet audio with built-in speakers that can be used as a confidence monitor or audible alarm from an external source. The unit is powered by only 12VDC and comes with an 110/240VAC adapter.

**INTEGRATED  
AUDIO**

**BACK LIGHT  
LIFE  
50,000  
HOURS**

**1.2  
MegaPixels**



LCD Diagonal	LCD Size	No. of LCDs	Resolution*	Aspect Ratio	Dot pitch	Viewing Angles	Backlight	Rack Size	Dimensions: US	Dimensions: Metric	Weight*
7" / 178mm	153 x 92mm	2	2400 x 480	15 : 9	0.063 x 0.175mm	120 / 130 degrees	50k hours	3	19 x 5.1 x 2.1"	483 x 130 x 53mm	5 lbs (2.3kg)

MODEL	INPUTS					OUTPUTS			Brightness	Contrast	Touch Screen	Weather Proof	Audio	Power
	Composite	VGA	S-Video	SDI	Analog Audio	Composite	SDI	Analog Audio						
RX-702A	4	2	-	-	2	-	-	-	400	400 : 1	-	-	Yes	3A at 12VDC

### CoolTouch Monitors LLC

P.O. Box 10771 - Marina del Rey, CA 90295 - Tel: (310) 923-1354 - Fax: (310) 392-3510  
[info@cooltouchmonitors.com](mailto:info@cooltouchmonitors.com) - [www.CoolTouchMonitors.com](http://www.CoolTouchMonitors.com)